

BIXOLON

Network Connection Manual

SRP-330/332III

Ver. 1.00



<http://www.bixolon.com>

Table of Contents

Copyright	3
1. Manual Information	4
2. Specifications.....	4
3. How to Connect	5
3-1 Connecting Printer	5
3-2 Checking Network Setting.....	6
3-3 LAN Setting Values.....	7
4. Ethernet Test by using Windows Test Page.....	8
5. Factory Reset	15
5-1 Initializing LAN Setting	15
5-2 Factory Reset Values.....	15
6. Troubleshooting.....	16

Copyright

© BIXOLON Co., Ltd. All rights reserved.

This user manual and all property of the product are protected under copyright law. It is strictly prohibited to copy, store, and transmit the whole or any part of the manual and any property of the product without the prior written approval of BIXOLON Co., Ltd.

The information contained herein is designed only for use with this BIXOLON product. BIXOLON is not responsible for any direct or indirect damages, arising from or related to use of this information.

- The BIXOLON logo is the registered trademark of BIXOLON Co., Ltd.
- All other brand or product names are trademarks of their respective companies or organizations.

BIXOLON maintains ongoing efforts to enhance and upgrade the functions and quality of all our products.

In the following, product specifications and/or user manual content may be changed without prior notice.

Caution

Electronics, such as printers, are prone to damage by static electricity. Therefore, to protect the printer from static electricity, be sure to turn off the printer before connecting or disconnecting the cable to the rear of the printer. If the printer is damaged by static electricity, contact your local dealer.

1. Manual Information

To change the printer settings, establish a connection by configuring its LAN and the network settings of the host e.g., PC, PDA.

2. Specifications

CATEGORIES	FEATURE	IMPLEMENTATION
LAN Specification	Interface	10/100 Base-T All in one(Auto detection)
	Protocol	DHCP Client, HTTP, ARP, ICMP, IPv4, TCP, UDP

3. How to Connect

To change the printer settings, establish a connection by configuring its LAN and the network settings of the host e.g., PC, PDA.

3-1 Connecting Printer

- Connect the LAN cable to the printer.
Establish a connection with the hub or host using a LAN cable.
For LAN configuration, use "Net configuration tool".

3-2 Checking Network Setting

- After the printer has finished booting, open the printer cover and press and hold the FEED Button for 5 seconds. This will cause the interface setting confirmation mode. Then add the paper, close the cover, and check that the following message is printed.

```
Checking Interface Setting

0: Exit
1: WLAN Information Print
2: WLAN Factory Reset and Reboot Printer
3 or more: None

Select Modes by Feed button control
as below.
  Step 1. Short-press as many times as
           The mode number to choose.
  Step 2. Long-press over 1 second.
  *e.g. To choose Mode 2, press Feed
        Button 3 times(short-short-long)
```

If the above message is printed, select Mode 1, and you will see the following WLAN data. (To select Mode 1, press the Feed button once quickly/ once long.)

```
LAN SETTING
MAC ADDRESS : 00:15:94:C2:6B:A8
IP ADDRESS   : 192.168.0.48
SUBNET MASK  : 255.255.255.0
GATEWAY      : 192.168.0.1
PORT         : 9100
INACT. TIME  : 0
```

<LAN Information Printing >

3-3 LAN Setting Values

Classification	Item	Description	Input Range
Network	Inactivity Time	TCP connection hold time	0~3600 integer
	IP Assignment Method	IP Assignment Method	DHCP/Manual
	IP Address	Printer IP	IP Address
	Subnet Mask	Subnet mask	IP Address
	Gateway	Default Gateway	IP Address



For changing network setting values using Net configuration tool, Refer to 'Net configuration tool manual'.

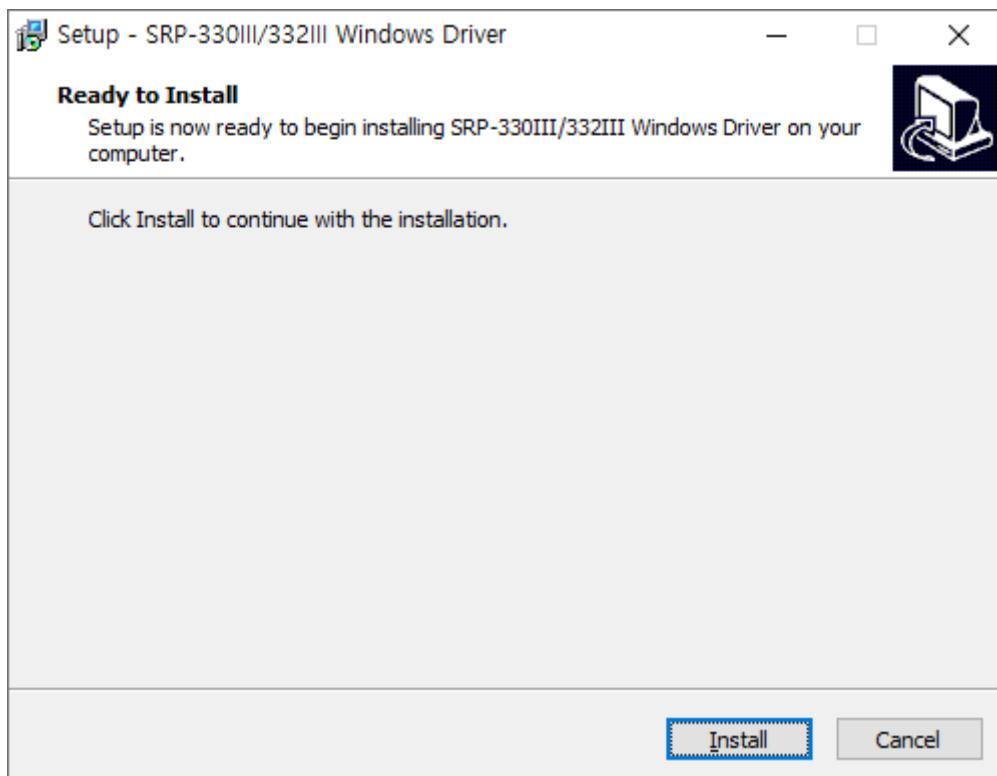
4. Ethernet Test by using Windows Test Page

You can use the Windows printer driver as shown below when there is no test program. Operating systems that allow you to use the Windows printer driver are Windows, XP, Server 2003, VISTA, 2008 Server, 7, 8, 10.

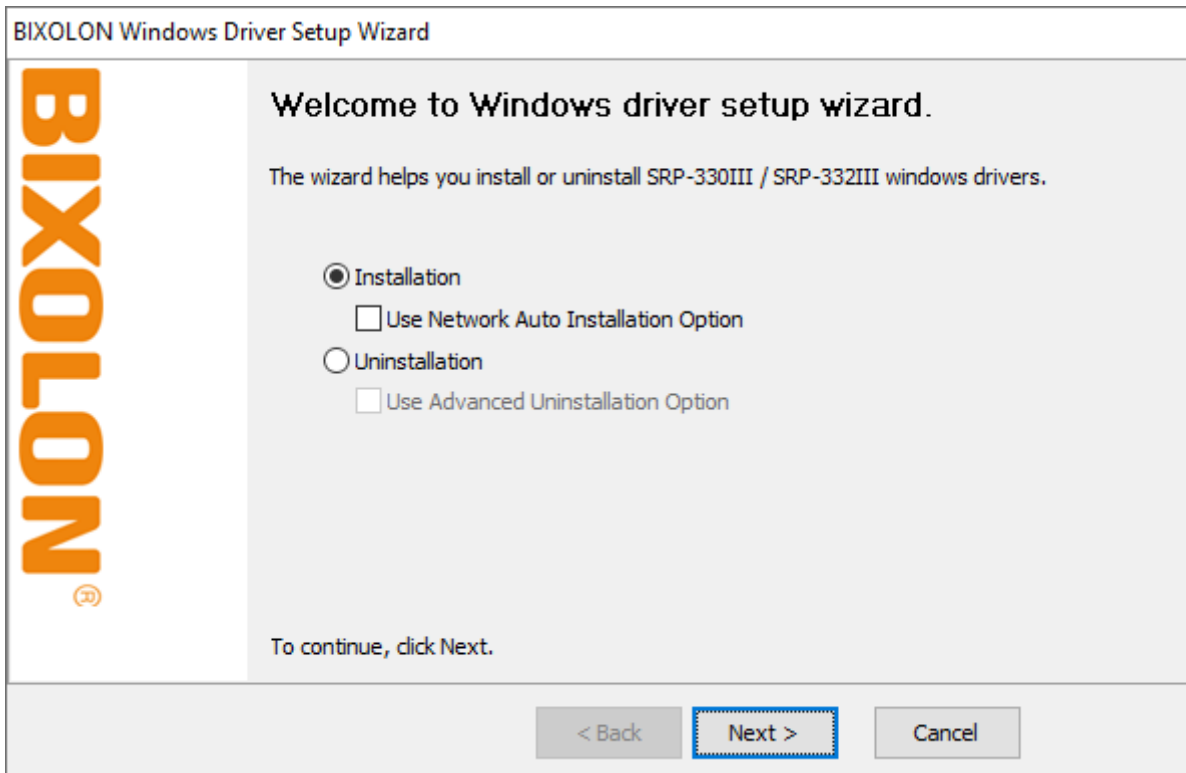


You can download the latest version of Windows driver from our home page. (www.bixolon.com)

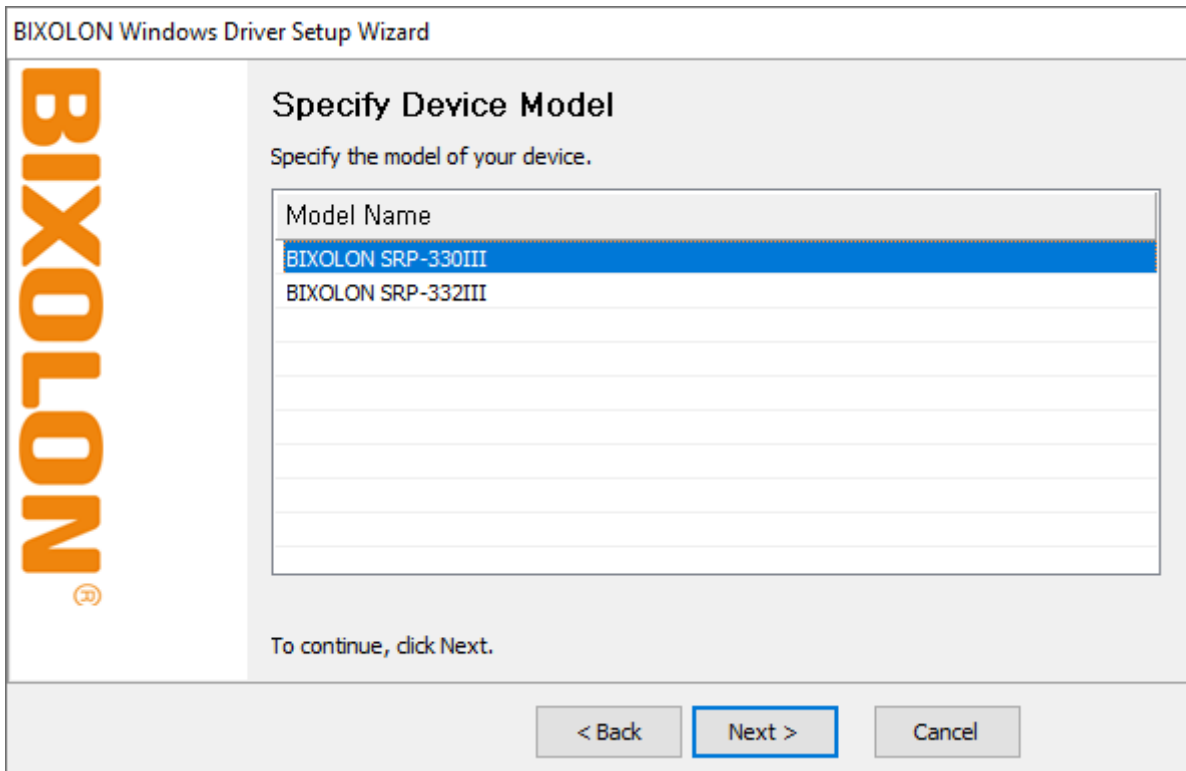
- 1) Double-click the Windows Driver installation file.
- 2) Click **Install**.



3) Select **Installation** and click **Next**.



4) Select **Model Name** and click **Next**.



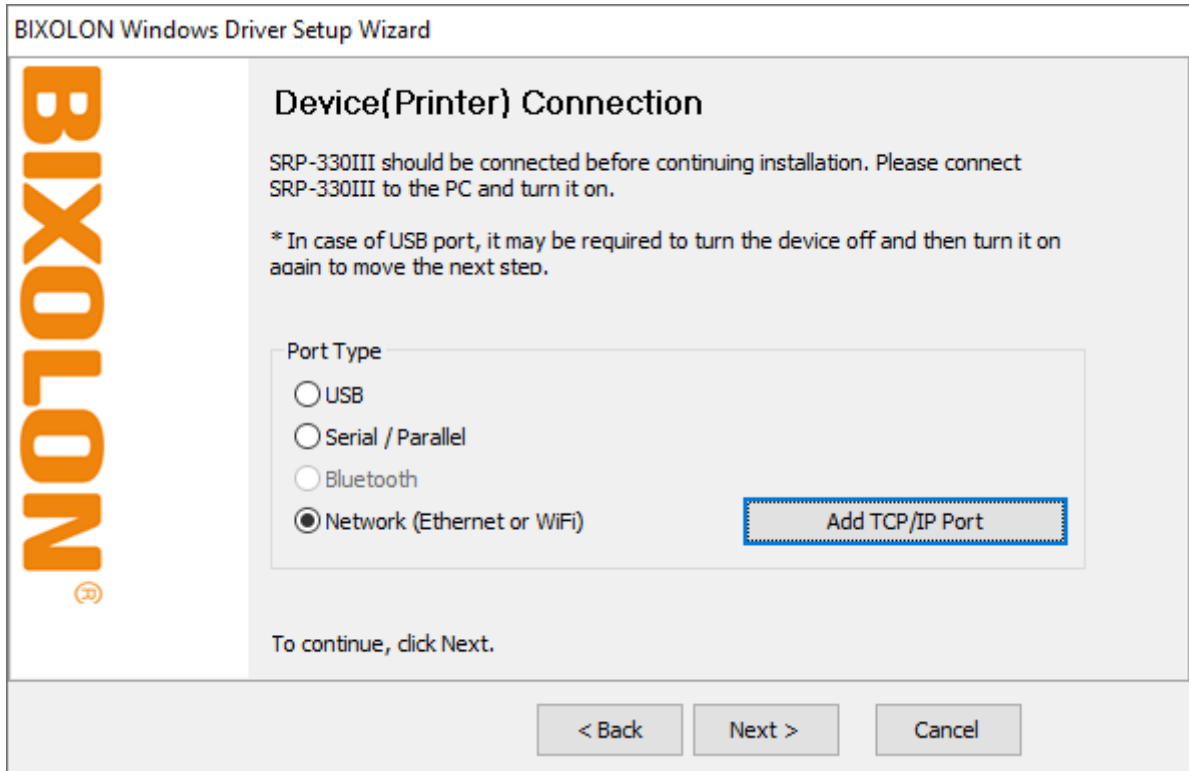
5) Select **Ethernet** and click **Add TCP/IP Port**.

The screenshot shows the 'BIXOLON Windows Driver Setup Wizard' window. On the left is the BIXOLON logo. The main area is titled 'Device(Printer) Connection'. It contains the following text: 'SRP-330III should be connected before continuing installation. Please connect SRP-330III to the PC and turn it on.' and '* In case of USB port, it may be required to turn the device off and then turn it on again to move the next step.' Below this is a 'Port Type' section with four radio button options: 'USB', 'Serial / Parallel', 'Bluetooth', and 'Network (Ethernet or WiFi)'. The 'Network (Ethernet or WiFi)' option is selected. To the right of these options is a button labeled 'Add TCP/IP Port'. At the bottom of the window are three buttons: '< Back', 'Next >', and 'Cancel'. The 'Next >' button is highlighted with a blue border.

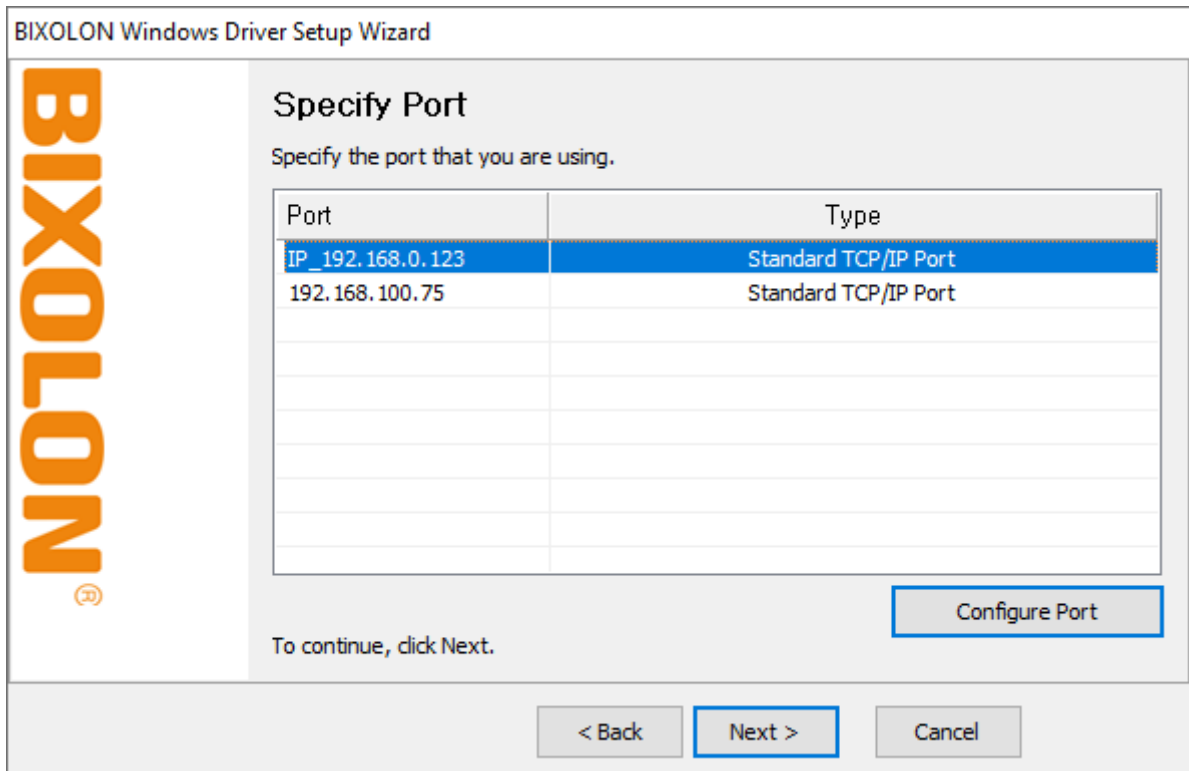
6) Enter the IP address and port number, and then click **Next**.

The screenshot shows a 'Standard TCP/IP Port' dialog box. It has a title bar 'Standard TCP/IP Port' and a section titled 'TCP/IP Port'. Inside this section, there are two input fields: 'IP Address : 192 . 168 . 0 . 123' and 'Port Number : 9100'. At the bottom right of the dialog box are two buttons: 'OK' and 'Cancel'. The 'OK' button is highlighted with a blue border.

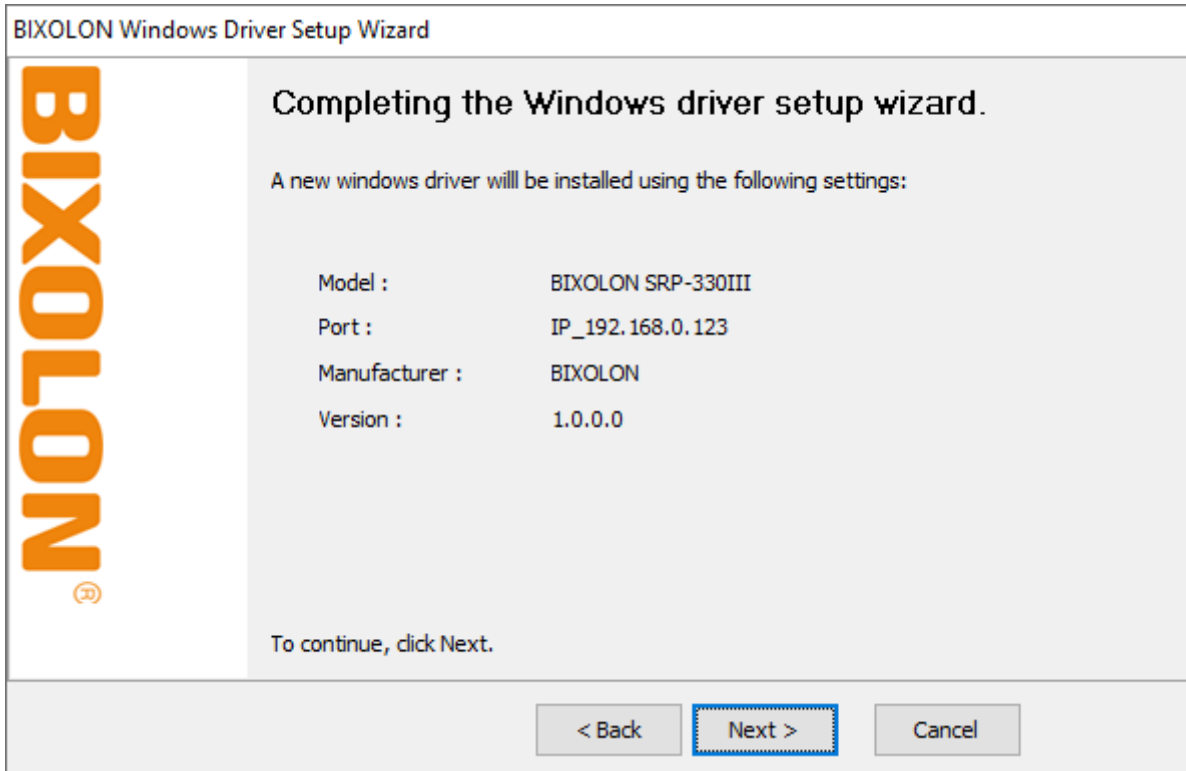
7) Click **Next**.



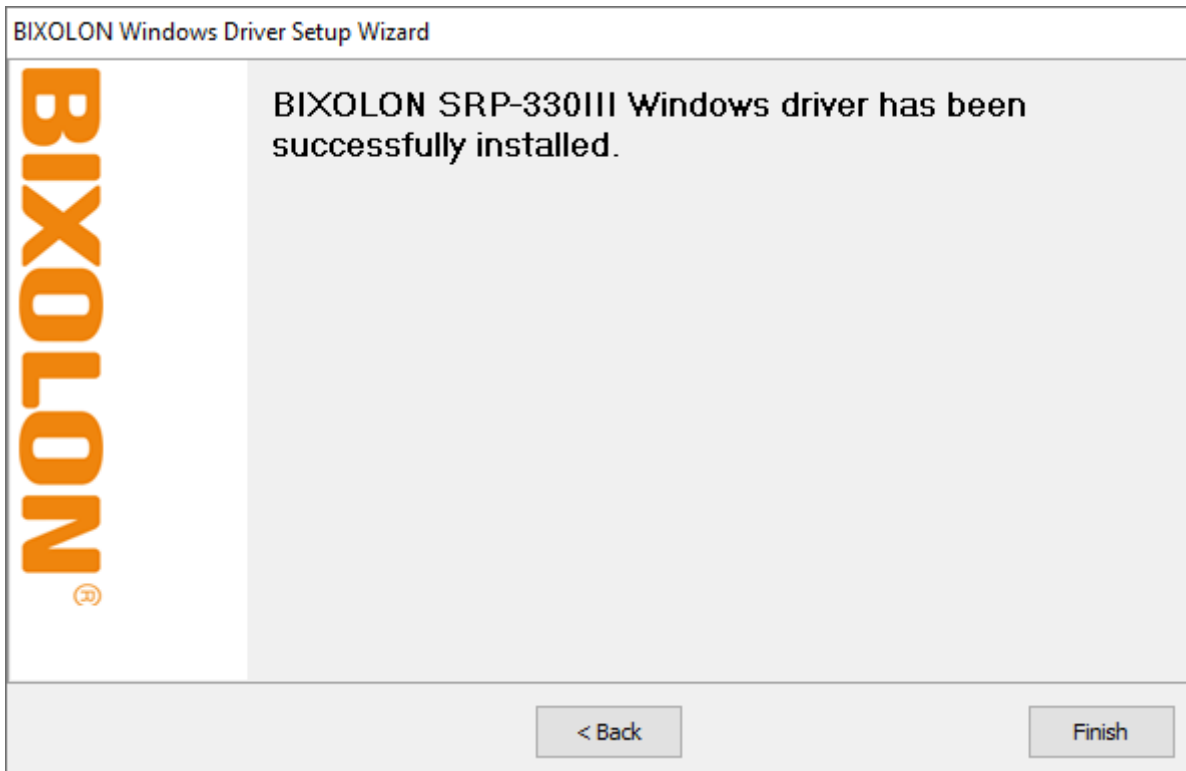
8) Click **Next**.



9) Click **Next**.



10) Click **Finish**.



Network Connection Manual

- 11) Open the printer properties window in the Windows OS.
Installing on Windows VISTA / Server 2008 / 7 / 8 / Server 2012 / 10
※ Control Panel – Hardware and Sound – Device and Printers.
- 12) In the **Ports** tab, click **Configure Port**.
- 13) 통신조건이 프린터와 일치되었는지 확인하십시오.

Configure Standard TCP/IP Port Monitor

Port Settings

Port Name: IP_192.168.0.123

Printer Name or IP Address: 192.168.0.123

Protocol

Raw LPR

Raw Settings

Port Number: 9100

LPR Settings

Queue Name:

LPR Byte Counting Enabled

SNMP Status Enabled

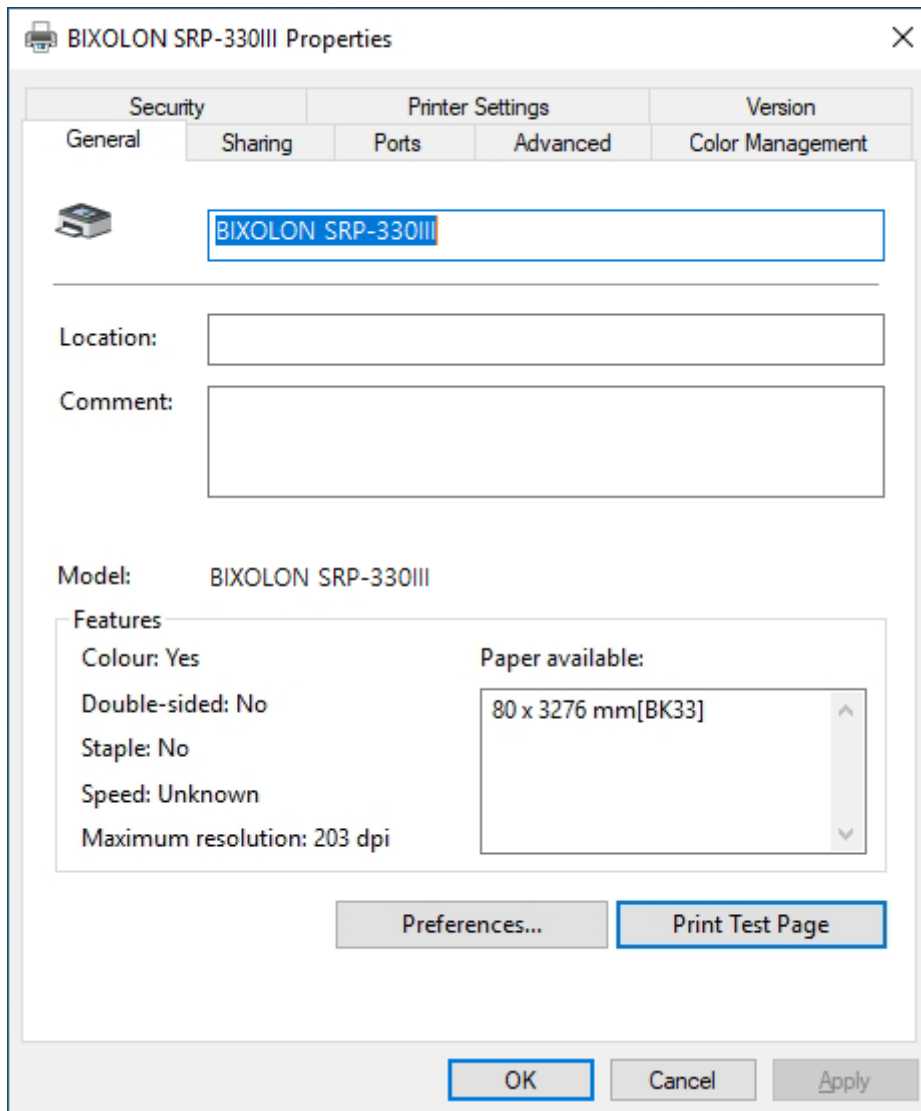
Community Name: public

SNMP Device Index: 1

OK Cancel

Network Connection Manual

- 14) Click **Print Test Page** and check printing status. Proper installation of the driver is indicated if the test page is printed normally.



5. Factory Reset

5-1 Initializing LAN Setting

- This function changes the LAN settings of the printer to the initial factory settings.
- After the printer has finished booting, open the printer cover and press and hold the FEED Button for 5 seconds. This will cause the interface setting confirmation mode. Then add the paper, close the cover, and check that the following message is printed.

Checking Interface Setting

0: Exit
1: LAN Information Print
2: LAN Factory Reset and Reboot Printer
3 or more: None

Select Modes by Feed button control as below.

Step 1. Short-press as many times as
The mode number to choose.

Step 2. Long-press over 1 second.

*e.g. To choose Mode 2, press Feed
Button 3 times(short-short-long)

If the above message is printed, select Mode 2, and you will see the following LAN data.
(To select Mode 2, press the Feed button twice quickly/ once long.)

After the above message is printed, the printer will automatically reboot.

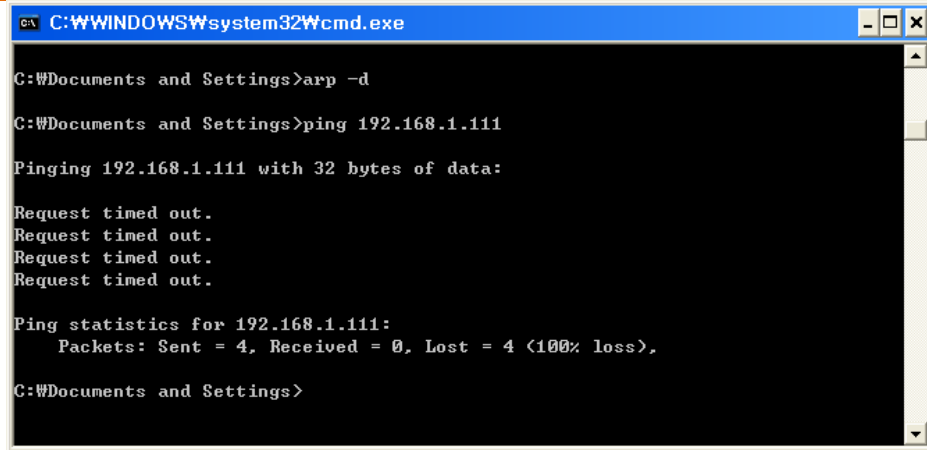
LAN FACTORY RESET OK! Reboot Printer.

5-2 Factory Reset Values

LAN	Network	Inactivity time	0
		IP Assignment Method	Automatic(DHCP)
		Local Port	9100

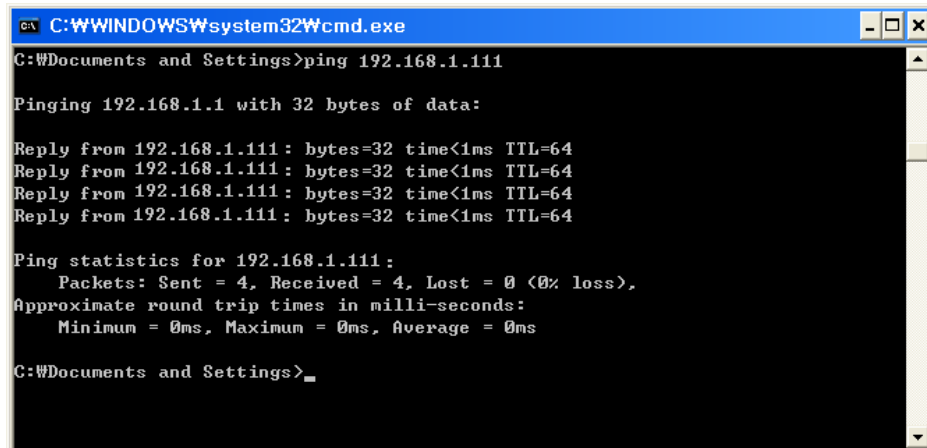
6. Troubleshooting

<p>Check network setting (Refer to Configuration for checking/changing the printer settings)</p>	<p>[IP Address] Check the band of the IP Address. Check whether the bands of the printer and the AP (or wireless terminals) are the same. The first three digits of the four digit value of the IP address must be the same.</p> <p>[Subnet Mask] Check whether the subnet mask of the printer matches the one in AP (or wireless terminal).</p> <p>[Port] Check whether the port configured in the printer and the host (PC, PDA) are the same.</p>
<p>PING Check</p>	<p>[Checking IP collision] When entering IP address manually without using DHCP, you must check whether the corresponding IP address is used by other equipment. The printer may not work normally when there is a collision in the IP address. When the printer is turned off, carry out the Ping Test to the printer IP.</p> <p>[Ping TEST] <ol style="list-style-type: none"> 1) Turn off the printer. 2) Select "Run" from the Windows Start menu, and then enter "cmd". 3) Enter "ARP -d" and delete ARP table. 4) Enter "ping {printer IP}". 5) ARP -d, ping {IP address} </p>



```
C:\WINDOWS\system32\cmd.exe
C:\Documents and Settings>arp -d
C:\Documents and Settings>ping 192.168.1.111
Pinging 192.168.1.111 with 32 bytes of data:
Request timed out.
Request timed out.
Request timed out.
Request timed out.
Ping statistics for 192.168.1.111:
    Packets: Sent = 4, Received = 0, Lost = 4 (100% loss),
C:\Documents and Settings>
```

When you see “Request timed out.” as shown below, it means that there is no collision. The corresponding IP can be used.



```
C:\WINDOWS\system32\cmd.exe
C:\Documents and Settings>ping 192.168.1.111
Pinging 192.168.1.1 with 32 bytes of data:
Reply from 192.168.1.111: bytes=32 time<1ms TTL=64
Reply from 192.168.1.111: bytes=32 time<1ms TTL=64
Reply from 192.168.1.111: bytes=32 time<1ms TTL=64
Reply from 192.168.1.111: bytes=32 time<1ms TTL=64
Ping statistics for 192.168.1.111:
    Packets: Sent = 4, Received = 4, Lost = 0 (0% loss),
    Approximate round trip times in milli-seconds:
        Minimum = 0ms, Maximum = 0ms, Average = 0ms
C:\Documents and Settings>_
```

On the other hand, if there is a reply as shown below, then the corresponding IP is used by another network terminal and it cannot be used for the printer IP.

Inactivity Time

If multiple host devices are used with one printer, “Inactivity Time” is Recommended.
(Other host devices are restricted to use a printer if one host device keep connecting to a printer.) ex) 5sec